



Inspiring Creativity, Delivering Excellence

in:ciite studios overview

in:ciite studios (formerly Paragon Studios) is a world class recording and audio post-production facility conveniently located just south of Nashville in the Cool Springs Franklin, TN area. Our studios provide a wide range of recording and post audio services for the Music, Film, TV, Video game, Spoken Word, and Streaming industries.

The purpose built multi-studio facility designed by Russ Berger (rbdg.com) features five studios with a blend of state of the art digital and classic analog outboard gear for audio recording and post production.

The studio has hosted and worked on several major motion pictures, including the Fox/ Bazmark film "*Australia*", the Universal film, "*The Pirates Who Don't Do Anything: A VeggieTales Movie*", and the four-disc DVD release of "*The Rolling Stones: The Biggest Bang.*"

The studios have been used for an extensive list of international recording artists including Carrie Underwood, Faith Hill, Keith Urban, Amy Grant, Kenny Loggins, Peter Frampton, and many more.

Studio A Overview

Studio A, with a large live room is perfect for tracking bands, ensembles, choirs, and orchestral sessions. The large control room houses a SSL 9080 XL series console, custom Dynaudio monitoring, and an array of classic outboard gear with surround sound mix capability. The studio has been designed to maximize visual communication with floor to ceiling glass and large daylight windows. The studio is completed by a private lounge situated next to the control room.

The studio A main room comprises three rooms with distinct acoustic properties: a large main room area, an isolation / Piano room, and an additional isolation room. Each room features high ceilings and excellent lines of sight for musicians and engineers. All of these areas have the added and somewhat exceptional advantage of natural daylight and the main area can handle demanding tracking and orchestral sessions of up to 30 players.

Studio A has historically been popular with the some of the industry's most well known artists as well as ADR Sessions for films, and video shoots for artists, organizations, and award shows.

Studio A Equipment

CONSOLE

Solid State Logic XL 9080K Series (80 Channel)

PRE AMPS

API 512c (x6)

John Hardy M1 (x4)

Soundfield MkV Processor/Pre-Amp w/SP451 Surround Decoder

(Studio A equipment list continued on next page)

(Studio A equipment list continued)

COMPRESSORS/LIMITERS/GATES

Neve 33609/J Stereo Limiter/Compressor

Teletronix LA-2A Reissue (x2)

Dbx 166

Dbx 160x (x2)

Dbx 902 (x4)

Dbx 904 (x2)

Empirical Labs EL8-X Distressor (x4) 2 Stereo linked pairs x/ all mods

Behringer MDX 2000 Compressor

Waves L2 Ultramaximizer

Drawmer DS201 Dual Gate (x2)

EQ's

API 560 Graphic EQ (x2)

API 550b Parametric EQ (x2)

GML 8200 Parametric EQ (Series 2)

DIGITAL FX

Lexicon PCM 42 (x2)

TC Electronics System M6000 w/8 ch Digital I/O - 6 ch analog I/O

Lexicon 960L (w/8 ch Analog/Digital I/O)

TC Electronics D-Two Delay (x4)

TC Electronics M-One XL Dual Effects Processor

Eventide DSP-4000 Harmonizer

MULTI-TRACK RECORD

Digidesign Pro Tools HDX w/ HD I/O's

(64 output channels / 48 input channels / 8 Digital)

Apple MacPro 2.4 GHz 2 x Quad Core Xeon Processor

Avid HD Sync

(Studio A equipment list continued on next page)

(Studio A equipment list continued)

INSTRUMENTS

Yamaha C-7 Grand Piano

MONITORING

Custom Dynaudio M4+ (L,C,R)

Custom DynAudio 18-Inch Sub (L,C,R)

DynAudio "Air 15" (RS1&2, LS1&2)

DynAudio "Base 2" Sub Woofer

POWER AMPS & CROSSOVERS

XTA Electronics DP224 Digital Programmable

Crossover System DynAudio DCA Series Amplifiers

MIXDOWN/PLAY-BACK/LAY-BACK

Alesis ML-9600 Masterlink

Tascam DA-45HR DAT Machine

Sony Blu-Ray Player

PROJECTION SYSTEMS

9 ft. Draper Micro-Perf motorized screen

Epson Pro G7400U HD Projector (5500 lumen)

STORAGE

Samsung EVO SSD OS and Record Drives DVD-R Optical Disc

CUE

AN-16/i Input Module & AN-R II 16 Channel Mixer(x12)

Whirlwind Stereo Cue Boxes (x15)

Sony MDR 7506 Headphones (x12)

Studio B Overview

Studio B is centered around a 256 input Solid State Logic C300 digital film mixing console and ProTools | HD system, this room has been used for many feature films, television, and music shows.

The studio has a very private feel and has its own lounge. The isolation room is large and has natural lighting As well as being a great tracking room, Studio B is also one of the most sought after ADR rooms in the Southeast.

Studio B Equipment

CONSOLE

Solid State Logic C300 Studio System

56 channel frame; 40 faders;

3 master channel panels Up to 512 channels; 80 buss outputs

128 Digital I/O; 24 Analogue I/O

64 Channels of DSP Processing

PRE AMPS

Universal Audio 2-610 Tube Amplifier (2 ch.)

M1 John Hardy's x 4

COMPRESSORS/LIMITERS/GATES

Tube-Tech CL-2A

DIGITAL FX

Yamaha SPX-900 Multi-Effects Processor

(Studio B equipment list continued on next page)



(Studio B equipment list continued)

MONITORING

Custom Dynaudio M4+ (L,C,R)
Custom DynAudio 18-Inch Sub (L,C,R)
DynAudio "Air 15" (L,C,R, RS1&2, LS1&2)
DynAudio "Air 6" (L,R)
DynAudio "Base 2" Sub Woofer

PROJECTION SYSTEMS

9 ft. Draper Micro-Perf motorized screen
Optoma TX1080 Full HD 1080p DLP Projector
(3600 lumen)

MULTI-TRACK RECORDERS

48 in 48 out channel 192 Digital I/O (not 80)
24 in 16 out channel 192 Analogue I/O (8 channels out moved to c)
Magma 7 slot 64bit PCI chassis
Apogee Big Ben 192k Master Clock

MIXDOWN/PLAY-BACK/LAY-BACK

Alesis ML-9600 Masterlink
Pioneer Elite DV-47A Capable of DVD/DVD- A/DTS/SACD playback

POWER AMPS & CROSSOVERS

XTA Electronics DP224 Digital Programmable/Recallable Crossover System
DynAudio DCA Series Amplifiers

CUE

Aviom AN-16/i Input Module
Aviom A-16II Digital 16 channel Headphone Mixer

Studio C Overview

Studio C is a perfect space for sessions that don't require the large space and equipment of studios A and B. Primarily a 5.1 ProTools | HD suite, this room is perfect for sound design, editorial, overdubs, and mix or pre-mix work.

Additionally, a sound isolation booth is attached to the room which allows for voice overs, ADR, or music overdubs and is a favorite for book publishers for audio book recordings.

Studio C Equipment

CONSOLE

24 Fader Digidesign D-Command main unit with Fader module
Attached Producer's Desk module with integrated Keyboard

PRE AMPS

API 512c (x4)

COMPRESSORS/LIMITERS/GATES

Universal Audio 1176LN Reissue (x1)

MULTI-TRACK RECORDERS

Avid Pro-Tools I HDX
8 channel 192 Digital I/O
192 Analogue I/O (8 In x 16 Out)
Avid HD Sync
Apogee Big Ben 192k Master Clock
Apple Mac Pro 2 x 2.4Ghz Quad Intel Xeon 32 GB 1066 MDz DDR3 RAM

(Studio C equipment list continued on next page)



(Studio C equipment list continued)

MONITORING

DynAudio "Air 15" (L,C,R, RS, LS)
DynAudio "Base 2" Sub Woofer
Digidesign XMON Monitor controller
Fostex RM-1 Stereo Rack Monitor

TV/MONITORS

Dell 27" 1920 x 1080 (x2)
Sony 46" 1080p HD TV

STORAGE

Internal Samsung 850 Evo 250GB OS Boot
Internal 7200RPM HDD 1TB work drive
DVD-R Optical Disc

Studio D Overview

We understand our clients benefit from the creative and inspirational atmosphere within our studios and Studio D provides the perfect environment to enhance the creative process whether you are in serious editing mode, or in the creative process of songwriting, programming, or doing a demo.

Studio D Equipment

CONTROLLER

PRESONUS FADER PORT

PRE AMPS

API A2d 312 (x2) (2 Pre's, not 2 units)

Avid HD Omni (x2) (2 Pre's, not 2 units)

MULTI-TRACK RECORDERS

Avid HD Omni

Avid Pro-Tools I HD NATIVE I/O

Apple Mac Mini 2.3Ghz Quad-core Intel i7 16 GB 1600 MDz DDR3 RAM

Sonnet xMac Mini Server

MONITORING

DynAudio "Air 15" (L,R)

M-Audio Bx5a (L,R)

Mackie Big Knob Studio Command System

STORAGE

1TB Internal HDD

1 TB Firewire External OWC HDD

CUE

Furman HDS-6 Headphone Distribution System

Furman HR-6 Headphone Remote Mixing Station



Studio E Overview

Studio E is in:ciite's audio and video editorial Suite. Featuring an HD projection system and 10ft Projection Screen with color neutral grey and blacks, this room is regularly used for feature film screenings.

Outfitted with ProTools HD and 5.1 surround sound, this room is also well suited for sound editorial and effects design.

Studio E Equipment

MONITORING

SPL Surround Monitor Controller 2489
Mackie HR 824 (L,C,R)
M-Audio BX5 (Ls,Rs)

PLUG-INS

Avid Pro Bundle (Avid)
iZotope RX 5 Advanced (iZotope, Inc.)
Sound Miner v4.5 PRO

MULTI-TRACK RECORD

Avid Pro-Tools HD Native
Avid HD Omni
Mac Pro 2 x 2.26 Quad-Core Intel Xeon 32 GB 1066 MHz DDR3 ECC RAM

PROJECTION/MONITORING

Canon WUX10 1080p Projector (3500 Lumens)
DA-LITE 118" Fabric Projection Screen
Blackmagic PCI Intensity Pro 4K (Video Output)
Apple Cinema HD 23-Inch Display (x2)

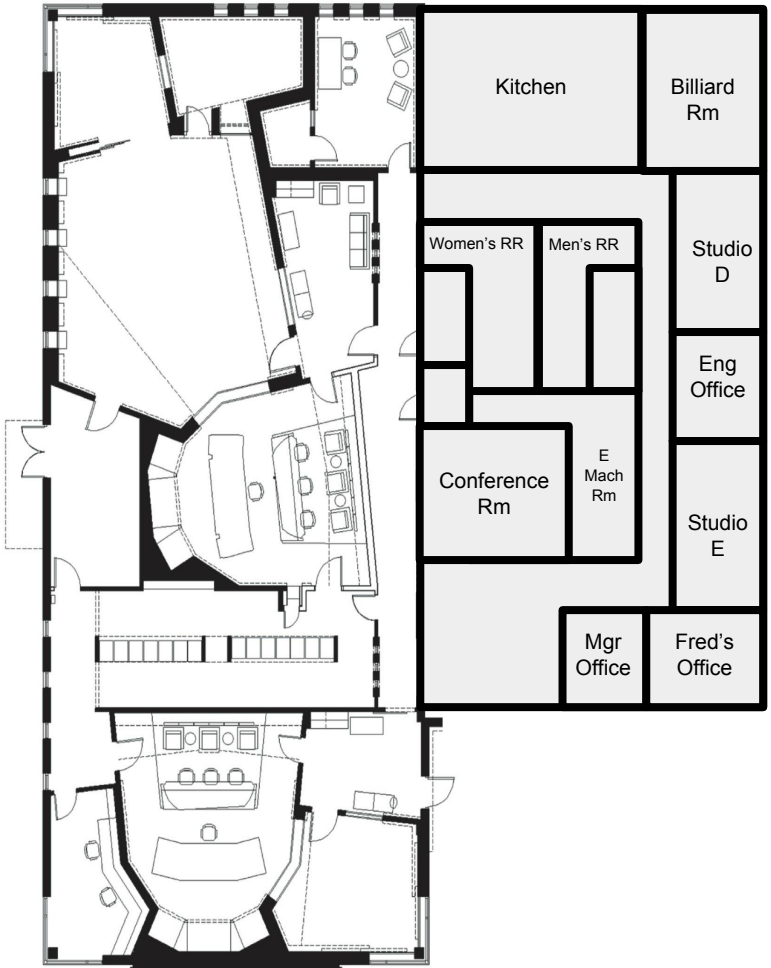
PLAYBACK

ProTools Computer based playback
Samsung Bluray player - BD-F7500

MIC LOCKER

AEA “Super Decca Tree” micing system (x1)
AKG C414TL (x2 matched pair)
AKG C414 XLS (x2)
AKG D112 (x1)
AKG C451b (x2)
Audio-Technica AT4050/CM5 (x2)
Audio-Technica AT4040 (x4)
Audio-Technica ATM25 (x2)
Audio-Technica ATM23HE (x4)
Audio-Technica ATM450 (x2)
Coles 4038(x2 matched pair)
Earthworks SR0 (x4)
Neumann M-150 Tube Omni (x3)
Neumann U-87ai Multipattern Condenser (x2)
Neumann KM184 Cardioid Condenser (x2)
Royer R121 (x2)
Schoeps CMC 6--U/P12-48 (x2 matched pair)
Sennheiser 421 (x6)
Sennheiser MKH50 (x2)
Sennheiser MKH416 (x1)
Shure SM57-LC (x10)
Shure SM-81 (x2)
Soundfield Mark V multichannel
Yamaha Sub-Kick

Avalon U5 DI
Countryman DI's (x8)



Kitchen

Billiard Rm

Women's RR

Men's RR

Studio D

Eng Office

Conference Rm

E Mach Rm

Studio E

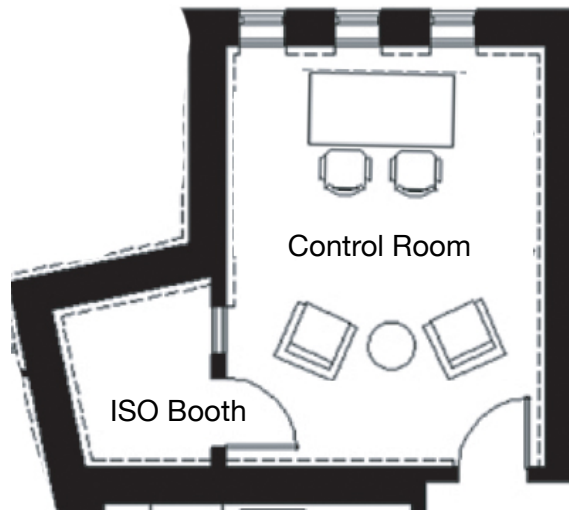
Mgr Office

Fred's Office

STUDIO C

FLOORPLAN

in:ciite STUDIOS
Studio C Floorplan



OVERVIEW

Studio C is a perfect space for sessions that don't require the large space and equipment of studios A and B. Primarily a 5.1 ProTools | HD suite, this room is perfect for sound design, editorial, overdubs, and mix or pre-mix work.

Additionally, a sound isolation booth is attached to the room which allows for voice overs, ADR, or music overdubs and is a favorite for book publishers for audio book recordings.

STUDIO C EQUIPMENT LIST

CONSOLE

24 Fader Digidesign D-Command main unit with Fader module
Attached Producer's Desk module with integrated Keyboard

PRE AMPS

API 512c (x4)

COMPRESSORS/LIMITERS/GATES

Universal Audio 1176LN Reissue (x1)

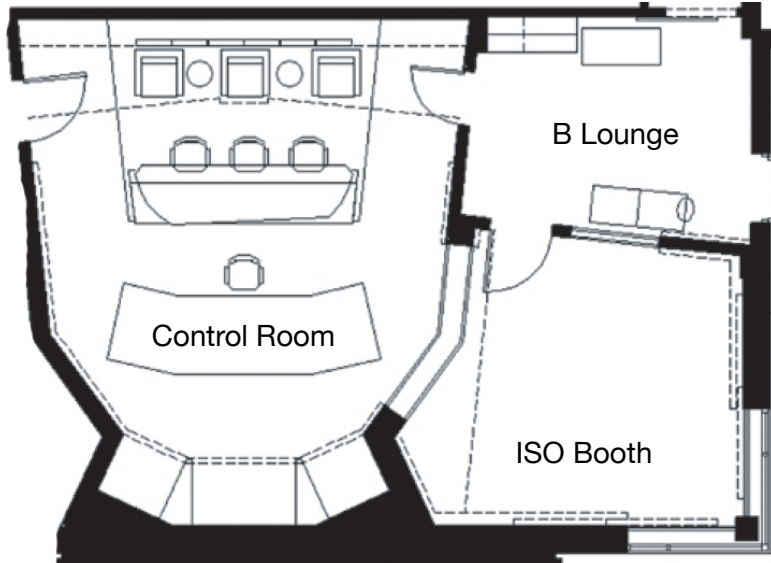
MULTI-TRACK RECORDERS

Avid Pro-Tools I HDX
8 channel 192 Digital I/O
192 Analogue I/O (8 In x 16 Out)
Avid HD Sync
Apogee Big Ben 192k Master Clock
Apple Mac Pro 2 x 2.4Ghz Quad Intel Xeon 32 GB 1066 MDz DDR3
RAM

STUDIO B

FLOORPLAN

 | STUDIOS
Studio B Floorplan



OVERVIEW

Studio B is centered around a 256 input Solid State Logic C300 digital film mixing console and ProTools | HD system, this room has been used for many feature films, television, and music shows.

The studio has a very private feel with its own dedicated lounge. The isolation room is large and has natural lighting As well as being a great tracking room, Studio B has been one of the most sought after ADR rooms in the Southeast.

STUDIO B EQUIPMENT LIST

CONSOLE

Solid State Logic C300 Studio System
56 channel frame; 40 faders;
3 master channel panels
Up to 512 channels; 80 buss outputs
128 Digital I/O; 24 Analogue I/O
64 Channels of DSP Processing

PRE AMPS

Universal Audio 2-610 Tube Amplifier (2 ch.)
M1 John Hardy's x 4

COMPRESSORS/LIMITERS/GATES

Tube-Tech CL-2A

DIGITAL FX

Yamaha SPX-900 Multi-Effects Processor

MONITORING

Custom Dynaudio M4+ (L,C,R)
Custom DynAudio 18-Inch Sub (L,C,R)
DynAudio "Air 15" (L,C,R, RS1&2, LS1&2)
DynAudio "Air 6" (L,R)
DynAudio "Base 2" Sub Woofer

PROJECTION SYSTEMS

9 ft. Draper Micro-Perf motorized screen
Optima TX1080 Full HD 1080p DLP Projector
(3600 lumen)

MULTI-TRACK RECORDERS

48 in 48 out channel 192 Digital I/O (not 80)
24 in 16 out channel 192 Analogue I/O (8 channels out
moved to c)
Magma 7 slot 64bit PCI chassis
Apogee Big Ben 192k Master Clock

POWER AMPS & CROSSOVERS

XTA Electronics DP224 Digital Programmable
Crossover System DynAudio DCA Series Amplifiers

MIXDOWN/PLAY-BACK/LAY-BACK

Alesis ML-9600 Masterlink
Pioneer Elite DV-47A Capable of
DVD/DVD- A/DTS/SACD playback

POWER AMPS & CROSSOVERS

XTA Electronics DP224
Digital Programmable/Recallable
Crossover System
DynAudio DCA Series Amplifiers

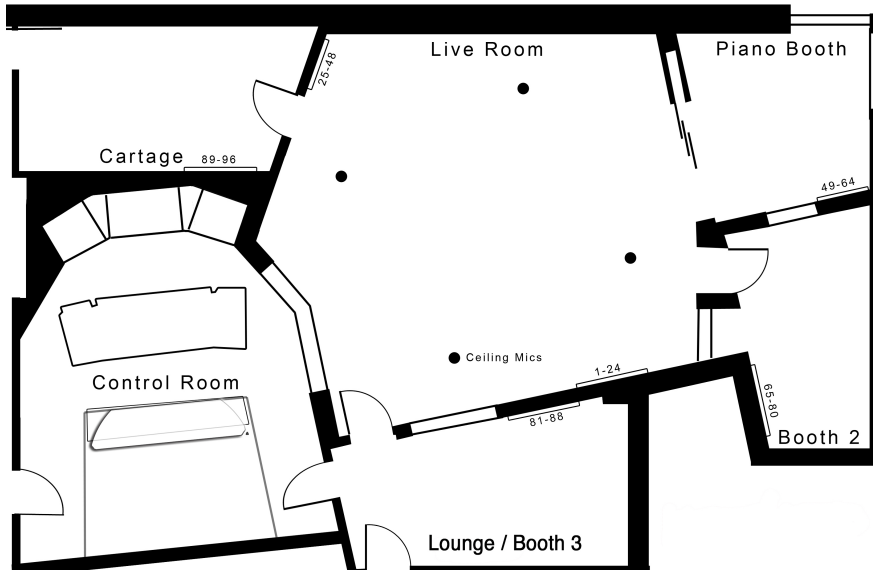
CUE

Aviom AN-16/i Input Module
Aviom A-16II Digital 16 channel Headphone Mixer

STUDIO A

FLOORPLAN

in:ciite | STUDIOS
Studio A Floorplan



OVERVIEW

Studio A has a large live room and is perfect for tracking bands, ensembles, choirs, and orchestral sessions. The large control room houses a SSL 9080 XL series console, custom Dynaudio monitoring, and an array of classic outboard gear with 7.1 surround sound mix capability. The studio has been designed to maximize visual communication with floor to ceiling glass and large daylight windows. The studio is completed by a private lounge situated next to the control room.

Studio A comprises the main room and four ISO rooms with distinct acoustic properties: a large main room area, an isolation / Piano room, and two additional isolation rooms. Room features include high ceilings and excellent lines of sight for musicians and engineers. All of these areas have the added and somewhat exceptional advantage of natural daylight and the main area can handle demanding tracking and orchestral sessions of up to 30 players.

Studio A has historically been popular with some of the industry's most well-known artists as well as ADR Sessions for films, and video shoots for artists, organizations, and award shows.

STUDIO A EQUIPMENT LIST

CONSOLE

Solid State Logic XL 9080K Series
(80 Channels)

PRE AMPS

API 512c (x6)
John Hardy M1 (x4)
Soundfield MkV Processor/Pre-Amp
w/SP451 Surround Decoder

COMPRESSORS/LIMITERS/GATES

Neve 33609/J Stereo Limiter/Compressor
Teletronix LA-2A Reissue (x2)
Dbx 166
Dbx 160x (x2)
Dbx 902 (x4)
Dbx 904 (x2)
Empirical Labs EL8-X Distressor (x4)
2 Stereo linked pairs x/ all mods
Behringer MDX 2000 Compressor
Waves L2 Ultramaximizer
Drawmer DS201 Dual Gate (x2)

DIGITAL FX

Lexicon PCM 42 (x2)
TC Electronics System M6000 w/8 ch Digital I/O -
6 ch analog I/O
Lexicon 960L (w/8 ch Analog/Digital I/O)
TC Electronics D-Two Delay (x4)
TC Electronics M-One XL Dual Effects Processor
Eventide DSP-4000 Harmonizer

MULTI-TRACK RECORD

Digidesign Pro Tools HDX w/ HD I/O's
(64 output channels / 48 input channels / 8 Digital)
Apple MacPro 2.4 GHz 2 x Quad Core Xeon Processor
Avid HD Sync

INSTRUMENTS

Yamaha C-7 Grand Piano

MONITORING

Custom Dynaudio M4+ (L,C,R)
Custom DynAudio 18-Inch Sub (L,C,R)
DynAudio "Air 15" (RS1&2, LS1&2)
DynAudio "Base 2" Sub Woofer

in:ciite | STUDIOS

MIXDOWN/PLAY-BACK/LAY-BACK

Alesis ML-9600 Masterlink
Tascam DA-45HR DAT Machine
Sony Blu-Ray Player

PROJECTION SYSTEMS

9 ft. Draper Micro-Perf motorized screen
Epson Pro G7400U HD Projector (5500 lumen)

STORAGE

Samsung EVO SSD OS and Record Drives
DVD-R Optical Disc

CUE

AN-16/i Input Module & AN-R II
16 Channel Mixer(x12)
Whirlwind Stereo Cue Boxes (x15)
Sony MDR 7506 Headphones (x12)

8 Large Portable Baffles